

Kluge OmniFold 3000 Series Automatic Folding & Gluing System



Overview

The Kluge OmniFold 3000 Automatic Folding and Gluing System is a fully modular converting system designed to fulfill today's needs and grow to meet the future demands of commercial printers, packaging manufacturers, and direct mail manufacturers.

Built to maximize converting capabilities while minimizing set-up time, the OmniFold includes features that bring productivity and innovation to a new level. The OmniFold also delivers the quality and rugged reliability you've come to expect from Brandtjen & Kluge.

Applications

- Packaging: Standard side seam cartons; cartons with internal integrated partitions; tuck top and tuck bottom; auto-lock bottom; cartons created around preconverted items; CD/DVD carriers created around CDs and other items; products created around tipped-on items such as credit/gift cards and postcards using fugitive glue.
- CartonsInMinutes®: On demand digital workflow.
- Mailing: Mailers; CD/DVD jackets, sleeves, wallets, and other carriers, with or without tape; small return envelopes; foldover reply cards and greeting cards; fugitive glue, Velcro, inline tabs for sealing mailers; inline personalization.
- Graphics: Standard, reinforced and medical presentation folders; accordion folders; expandable pocket folders; CD/DVD wallets; standard, reinforced and flexible book covers; multi-fold brochures; display packaging & cards; table tents; hotel key & ticket holders.

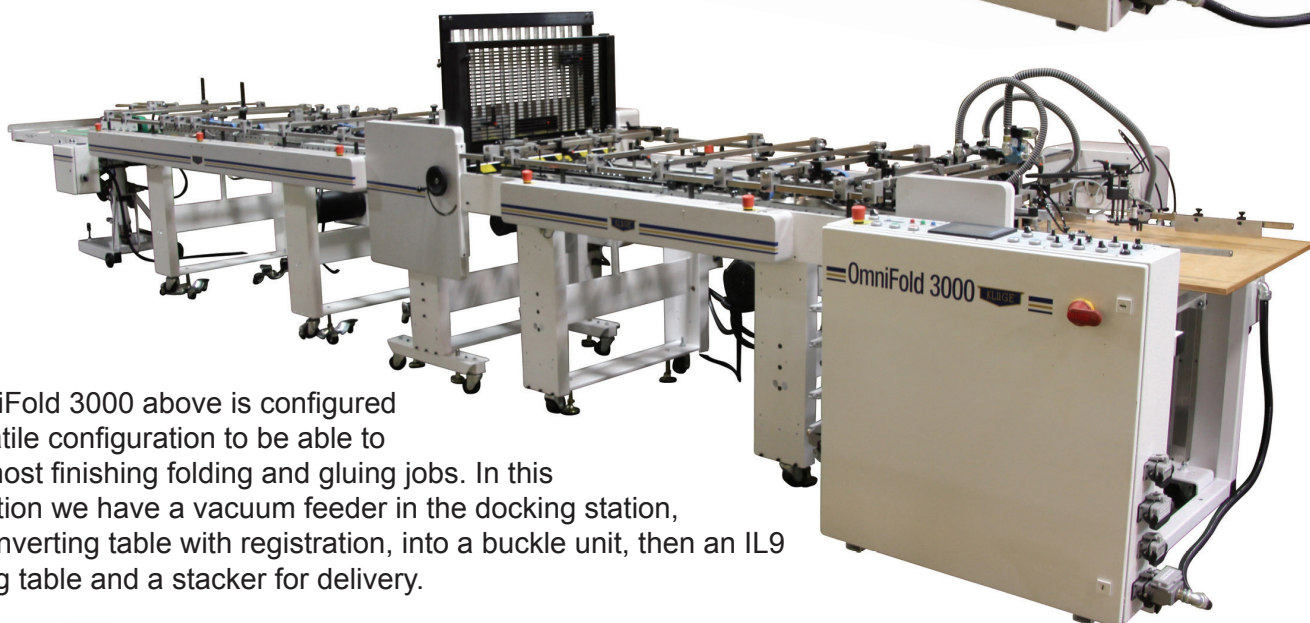
Features, Options and Accessories

- Control Console and Docking Station - Includes touchscreen controls and synchronized control of all modules.
- Modular Vacuum Feeder and Modular Friction Feeder - Mobile modules allow you to quickly change between vacuum and friction feeding. Self aligning feature minimizes changeover time.
- Left (standard) and Right (optional) Alignment - EXCLUSIVE FEATURE saves time and expands converting capabilities.
- 3ft (IL-3), 6ft (IL-6) & 9ft (IL-9) Converting Units - Add converting length with interchangeable units.
- Bottom Bearing Bed Transports - Provide product control and eliminate skew.
- Flipgate - Provides a rotary-actuated cross fold.
- Synchronous Belt Drives - Require minimal maintenance.
- PATENTED Dual-Angle Buckle Folder - Produce faster, quality crossfolds on both heavy and lightweight stock.
- Bump90 - Rotates stock 90 degrees for folding and gluing.
- Score-N-Convert Kit - Score and perforate inline.
- Fold Hook Kit - For various auto-lock bottom applications.
- Tab Blaster - For the conversion of interior glue flaps.
- 6.5", 18", 33" and 36" Top Belt Drives - Provide product control with less make-ready time.
- Accordion Kit - Convert accordion folders and similar folds.
- Stacker Unit - Compresses, counts & batches product.
- Compression Stacker - Provides necessary time and compression for successful cold glue applications.
- Tipping, placing, tabbing, taping, inkjetting & labeling options
- Hot, Cold & Fugitive Glue Systems - Various models

The modular design of the OmniFold 3000 means this Folding and Gluing System can be configured for your needs and the configuration can easily be changed if and when needed.



OmniFold 3000 configured for short run finishing jobs. In this configuration we have a vacuum feeder in the docking station, an IL6 converting table with a flip gate for cross folding and a stacker for delivery.



The OmniFold 3000 above is configured in a versatile configuration to be able to convert most finishing folding and gluing jobs. In this configuration we have a vacuum feeder in the docking station, an IL6 converting table with registration, into a buckle unit, then an IL9 converting table and a stacker for delivery.



OmniFold 3000 configured for converting cartons and boxes with a friction feeder in the docking station, an IL3 converting table, IL6 converting table and a compression stacker for delivery. An optional Fold Hook kit is available for converting auto-lock bottom boxes.

The Open Framework of the OmniFold 3000 means it is easy to set up, easy to run and easy to change over from job to job.



OmniFold 3000 short configuration for converting boxes, sleeves and other straightline products, but easily changed to be able to do other jobs as well. In this configuration the OmniFold 3000 has a Friction Feeder in the Docking Station, an IL6 converting table and a stacker.



What drives the need for a new class of folder-gluer?

The evolution of DIGITAL PRINT! Graphics and Packaging markets are converging as a result of the evolution of Digital Print.

Packaging Class solutions are designed to deliver speed and most importantly sustained quality throughout a run. Graphics Class solutions are designed for flexibility and quick changeover. The new Digital Print Package Converting market demands both.

Let our technical staff walk you through the features that can benefit your operation

“Our Kluge plays a big part in our plan to service the growing folding carton market. Our customers have motivated us to grow in this area and offer crash lock bottom boxes, tuck bottom boxes, and other sophisticated folding and gluing applications. Kluge’s modular design lets us add components as the need occurs.” - Todd Pemberton | C&D Printing

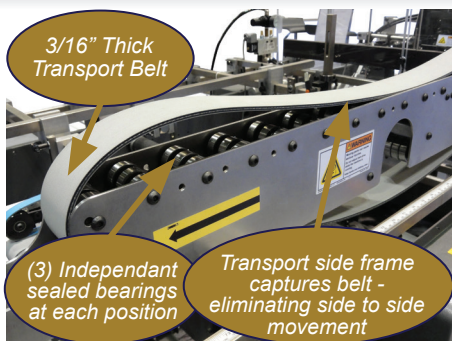
What makes a Hybrid a Hybrid?

Unique features that are not found in current designs of Packaging and Graphics Class folder gluers.

- **Modular Alignment System**
 - Packaging: Fixed station
 - Graphics: Fixed belts or not available
- **Modular Pre-Breaking Device**
 - Packaging: Fixed station
 - Graphics: Modular or not available
- **Interchangeable Bearing Bed Transports**
 - Packaging: Fixed transports with side to side adjustment.
 - Graphics: Not available
- **Automatic Belt Tensioning**
 - Packaging: Standard
 - Graphics: Not available
- **Modular Auto-Lock Bottom Device**
 - Packaging: Fixed station
 - Graphics: Modular or not available
- **Interchangeable Vacuum Transports**
 - Packaging: Fixed station or not available
 - Graphics: Fixed station or not available
- **“3 Foot Repeat” Design Philosophy**
 - Packaging: Not available
 - Graphics: Not available

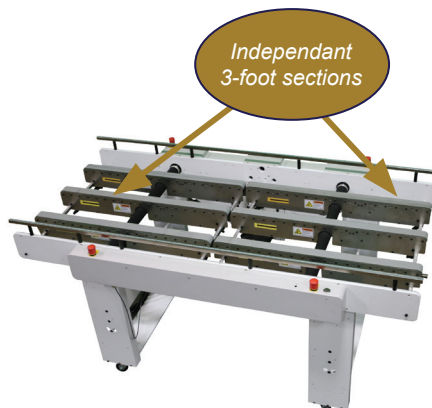
Kluge folding and gluing systems are the only systems that offer all of the features listed above. Our “3 Foot Repeat” design allows for maximum flexibility without ever sacrificing the quality are clients have come to expect.

OmniFold 3000



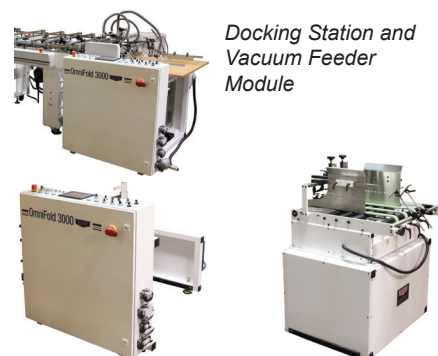
Interchangeable Bearing Bed Transports

The bearing bed transports provide in-line, left or right hand alignment operation. Built for endurance and reliability with a 3/16" thick transport belt, side frame capture of the belt, sealed bearing support and automatic belt tensioner. The transports feature Kluge's "drop-in" interchangeable design for fast and easy positioning and removal for off-line maintenance.



3 Foot Repeat

Each 3-foot section is uniquely configured per application. In-line or angled transports move product at each section. The transports are simple to interchange from section to section. The vacuum transports are also interchangeable with the bearing bed transports.



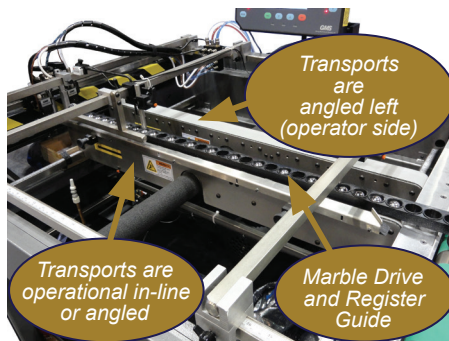
Control Console and Docking Station

The modular friction feeder is self-aligning and portable. The vacuum pile feeder can be interchanged with the friction feeder in less than two minutes. Either feeder can be operated off-line for set-up or maintenance while the primary system is in production.



Interchangeable Vacuum Transports

The vacuum transports feature Kluge's "drop-in" interchangeable design for fast and easy positioning and removal for off-line maintenance. Vacuum transports are interchangeable with bearing bed transports and eliminate the need for top drive wheel sets and belts allowing for accessories such as ink-jet addressing and variable data systems, vision and verification systems, complex tip-on applications, and label applications.



Alignment System and Pre-Breaking Device

With integrated left and right registration, makereadies on the OmniFold are a breeze. Realignment of the product after a 90-degree turn is made simple by dropping in the side guide and marble bar, then skewing a Bearing Bed Transport left or right to drive the sheet into the register guide. A pre-breaking device can be incorporated into the inline system to break the unfolded scores of a carton.

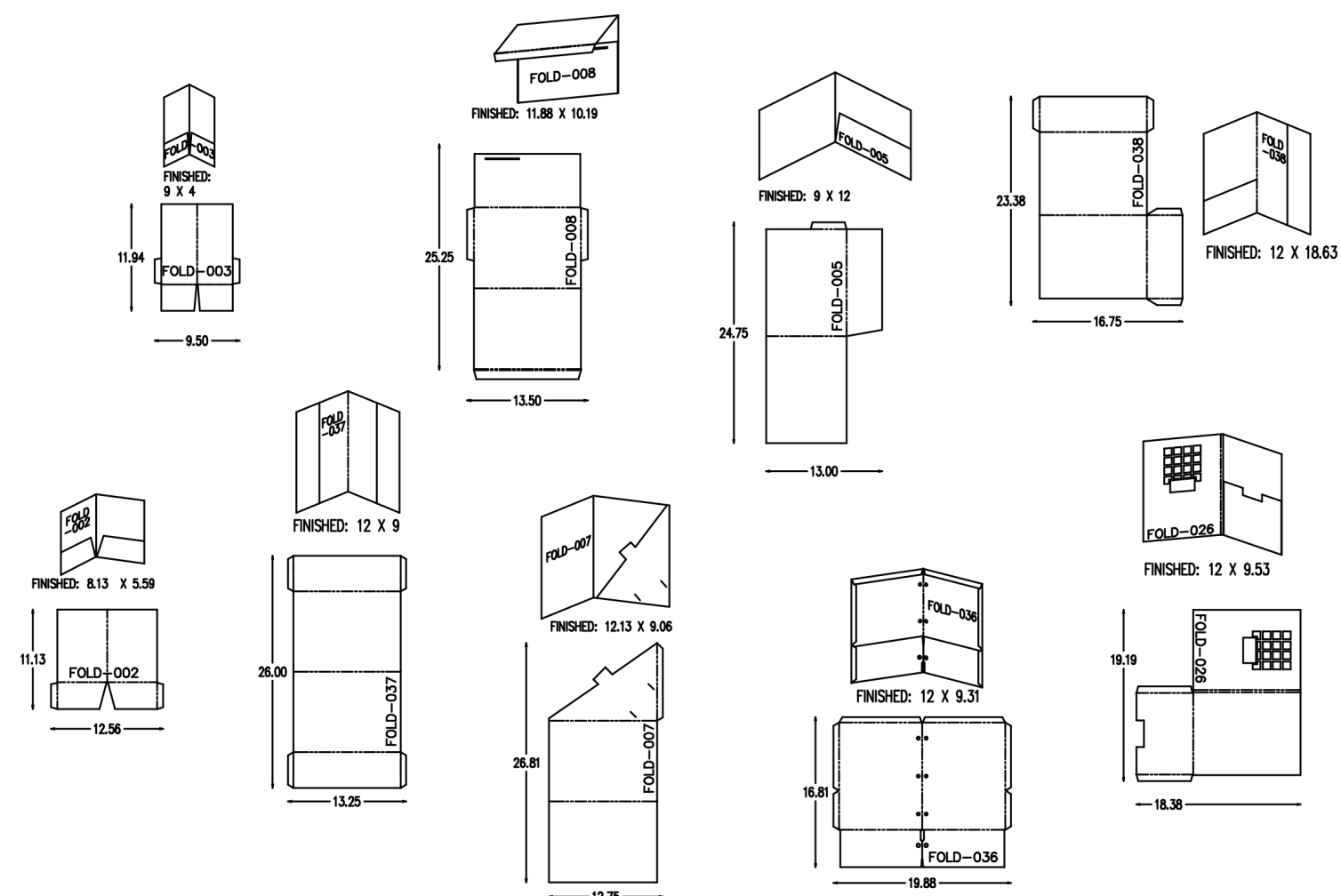


Dual-Angle Buckle Plate

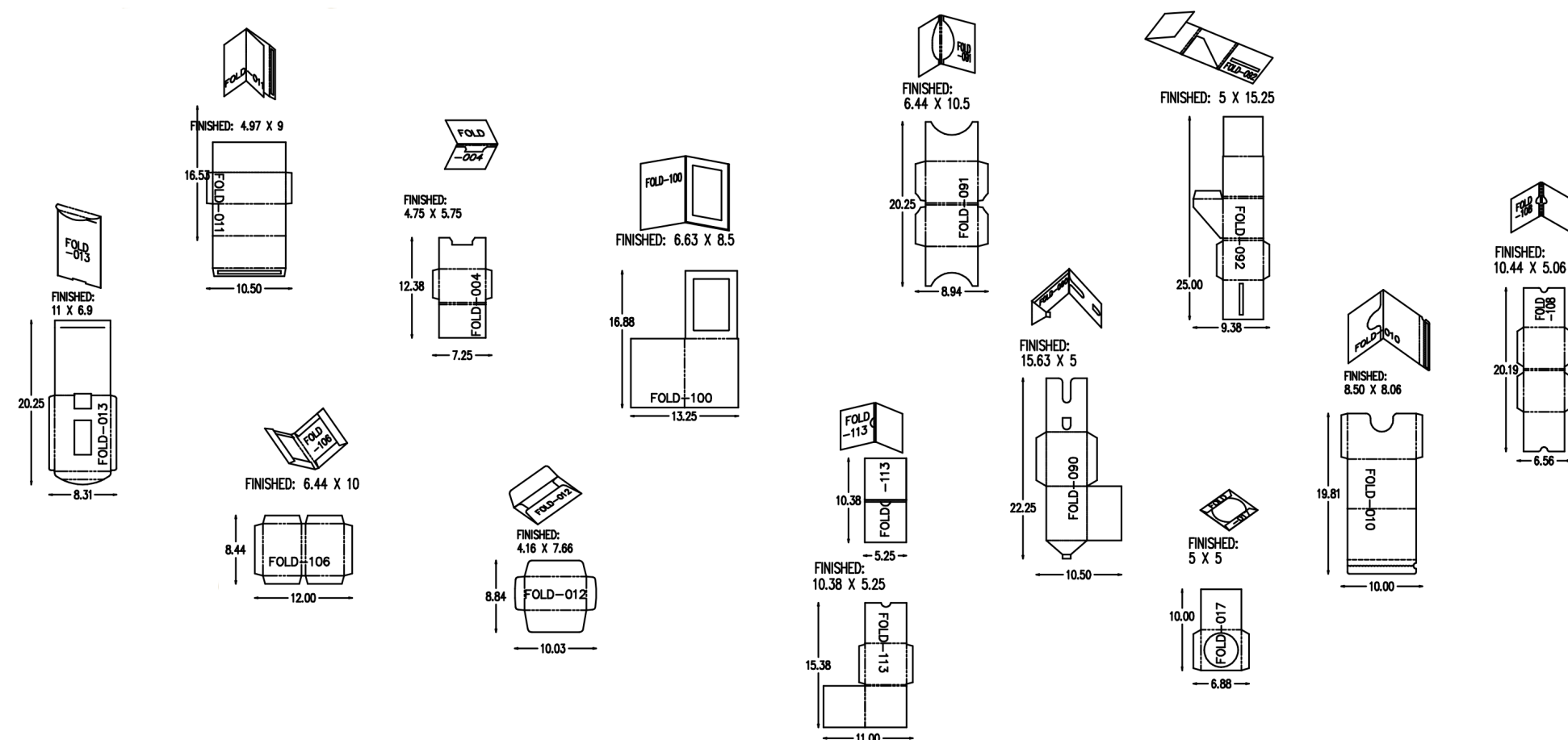
A patented design only available from Kluge, the buckle plate features quick change-over between vertical and angled positions and operates at speeds 30% to 40% faster than tipper plates and air gates. Converting crossfolds on the buckle plate results in more open converting space for other operations. The vertical position eliminates "crows feet" on stock weights 10 pt. and above while the angled position provides effective sheet control on stock weights 10 pt. and below.

Specifications		English	Metric
Average length (approx.)		23' - 27'	7010 - 8230 mm
Width		72"	1830 mm
Height		72"	1830 mm
Operating Speed	450 fpm		
Maximum Sheet Size		30"w x 32"	762 x 812 mm
Minimum Sheet Size		4"w x 2.5"	121 x 96 mm
Stock Range	coated/uncoated	.004" - .030"	60 - 660 gsm
Electrical		220-230V, single-phase, 50/60 Hz, 40 Amp	
Air		90 psi @ 15 cfm	

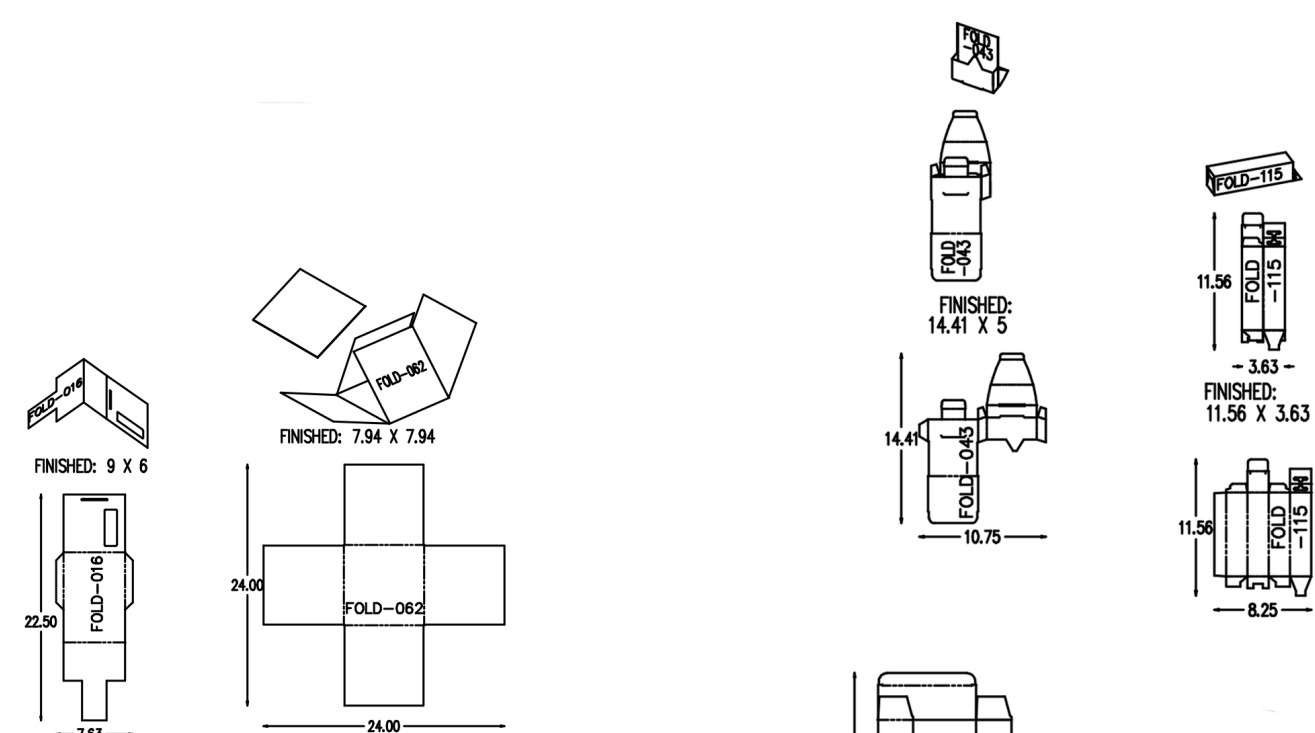
Brandtjen & Kluge, Inc.
539 Blanding Woods Road
St. Croix Falls, WI 54024
Toll-Free: (800) 826-7320
Phone: (715) 483-3265
Fax: (715) 483-1640
Email: sales@kluge.biz
www.kluge.biz



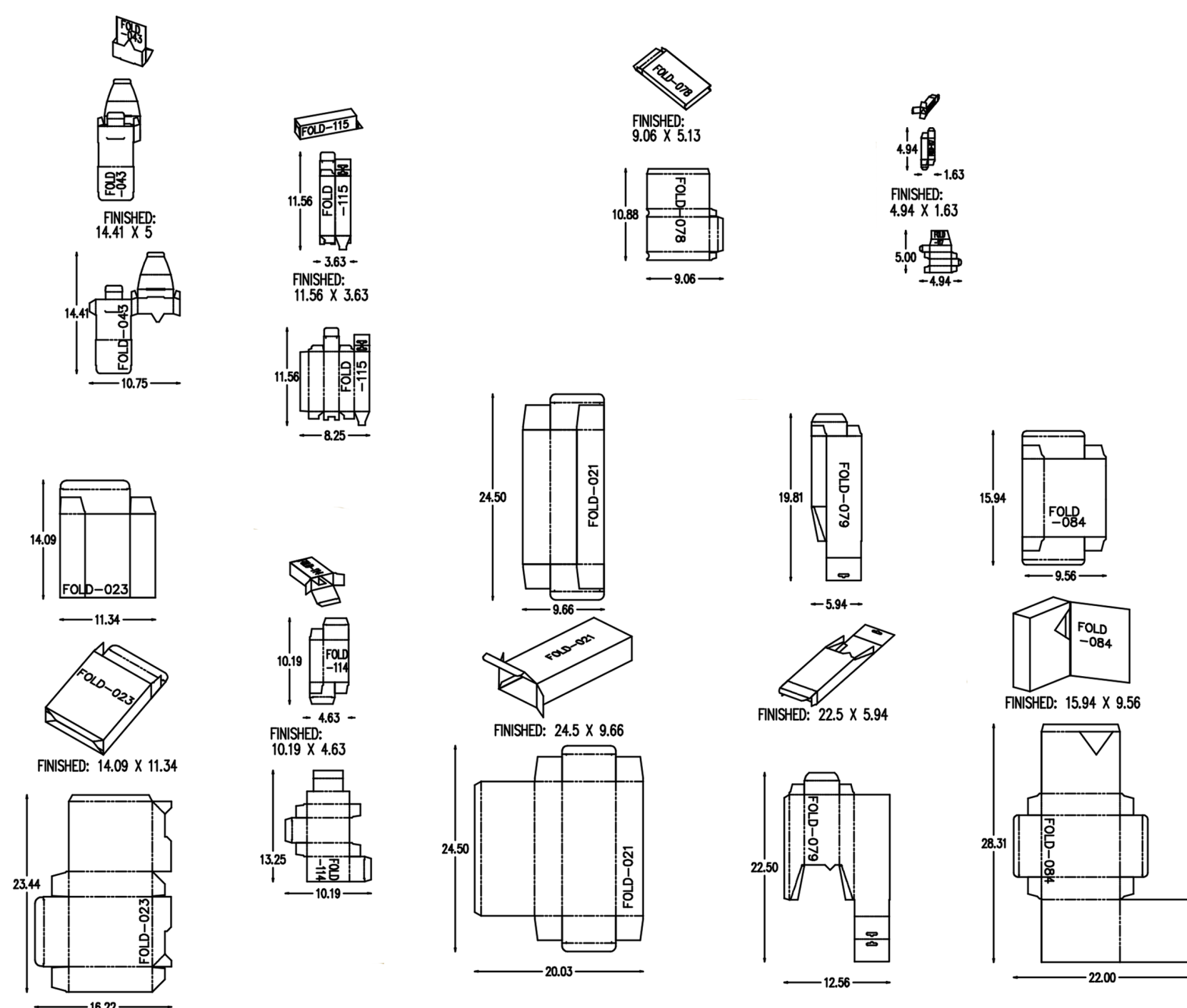
Presentation Folders



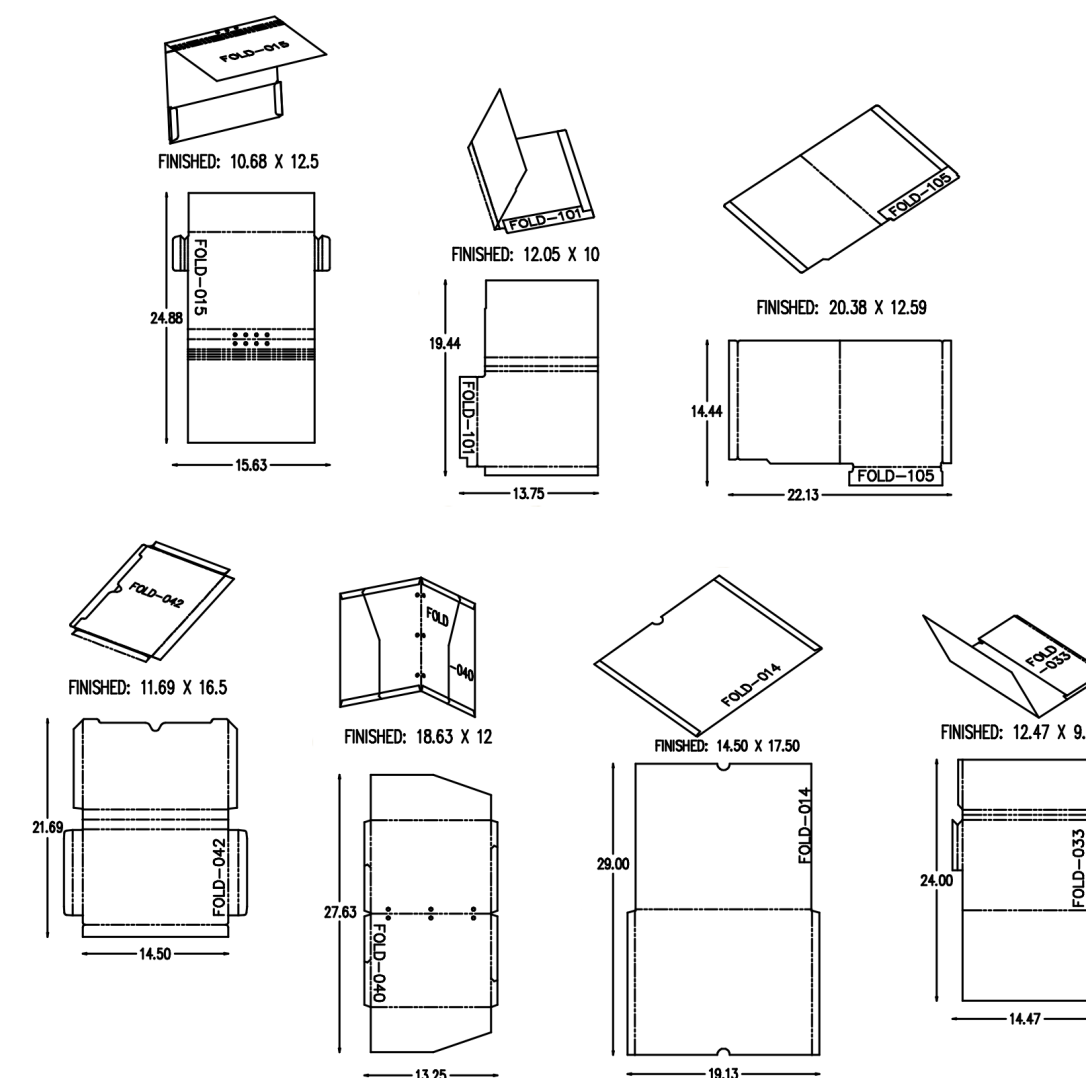
Wallets and Sleeves



Mailers



Folding Cartons



Specialty File Folders