

EUROCUTTER®
different, but better



see the difference, take the better

SP2

Cutting



EUROCUTTER® SP2

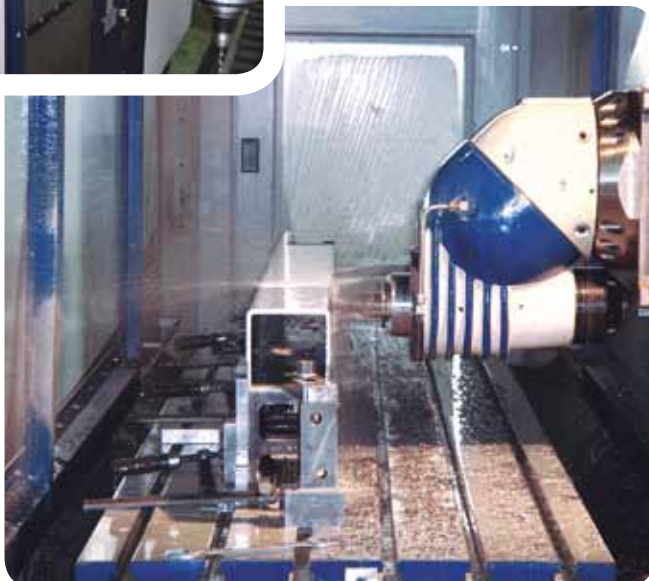
The new guillotine generation – different, but better

EUROCUTTER® sets new standards for guillotines in view of the cutting process.

The new **EUROCUTTER®** SP2 guillotine-series complies with maximum standards; as single-machine or in the centre of an automated cutting line.

The **EUROCUTTER®** standard equipment leaves nothing to be desired, as almost everything is standard.

With high vertical integration and the purchase of necessary and approved components of world-wide known leaders of technology, the **EUROCUTTER®** SP2 guillotine sets new standards in quality.



EUROCUTTER® SP2

The new series stands for:

Sturdy, powerful and long-lived

due to tight and buckling resistant machine frame and the use of precision units for back gauge positioning, knife drive and guidances.

Efficient and economic

due to high altitudes, rapid back gauge speed as well as easy and fast knife change.

High precision

due to a mutual linear back gauge guidance and precision ball screw for back gauge positioning.

Highest safety

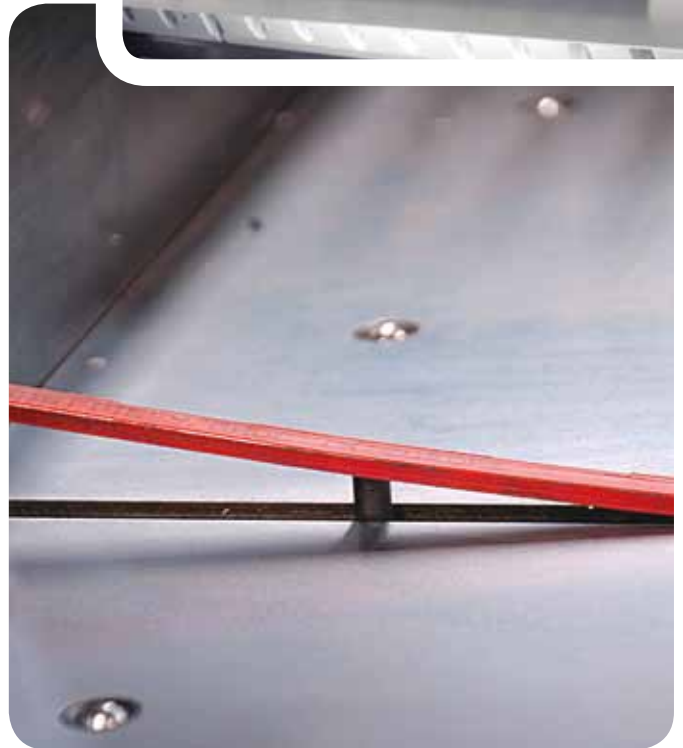
EUROCUTTER® SP2 guillotines are constructed according to the CE – machine building regulations and guarantee highest safety.

Easy to use

modern, clearly arranged operator panel, data input via pointer dot keyboard respectively Touch Screen Monitor (TM and TSM). The XLM type is equipped with a 18.5" Full-Touch Screen Monitor in format 16:9. Symbols are consistent, uncomplicated and self-explanatory. Including format-programming and cutting bar ejector.

Individuality

A comprehensive range of products with 6 cutting widths from 780 to 1760 mm and 3 resp. 6 different control versions, offer the right product for each customer.



EUROCUTTER® SP2

Everything is standard – unbelievable, but true!

- 1** The boosted and buckling resistant machine frame avoids vibrations and increases the cutting accuracy to the maximum.
- 2** Approved and powerful knife drive technology via worm gear and hydraulic clutch.
- 3** Standard cast iron machine with main and side tables hard chromium plated. All tables equipped with air nozzles. Extra large side tables in format 1000 x 750 mm available from cutting width 1150 mm.
- 4** Rapid, safe and uncomplicated knife change from the front. Short set-up times and maximum knife life time due to lifting technique and adjustment gauge.
- 5** Cutting bar ejector standard, located under the table.
- 6** Remote-control remote monitoring (preparation).
- 7** Clearly arranged: the monitor, the operator panel with pointer dot keyboard as well as the balance wheel for back gauge fine adjustment, everything is positioned at eye level.
- 8** Large 18.5" Full-Touch Screen Monitor for XLM version.
- 9** Work organization:
Order sheet holder and extendable drawer below the side tables.

- 10** Safety is maximized.
Standard safety package including 25-channel self-controlling light beam barriers, completely closed and electrically controlled rear table, clamp protection device, two-hand cut release with inhibition of repetitive cutting; pushing block.
- 11** Back gauge guidance by mutual linear guidance, therefore no slit in the cutting table.
- 12** Precision ball screw with servo drive, automatic speed regulation by back gauge speed control.
- 13** Complete rear table cover, as standard, electrically secured, fast opening for knife backside cleaning.

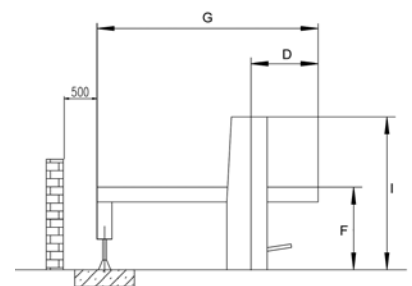
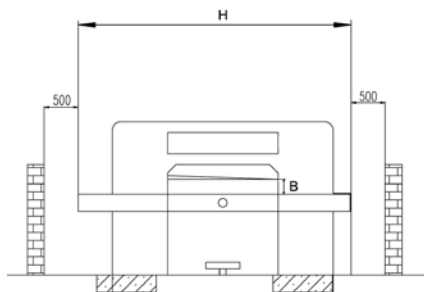
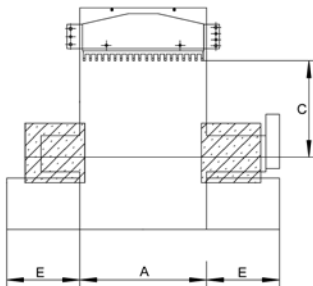




EUROCUTTER® SP2

Everything is standard – unbelievable, but true!

EUROCUTTER®		780	920	1150	1370	1550	1760
A Cutting width	mm	780	920	1150	1370	1550	1760
	inch	30.7	36.2	45.3	54	61	69.3
B Clamp opening	mm	120	130	165	165	165	165
	inch	4.7	5.1	6.5	6.5	6.5	6.5
C Rear table length	mm	780	920	1150	1450	2000	2000
	inch	30.7	36.2	45.3	57.1	78.7	78.7
D Front table length	mm	690	690	735	735	750	750
	inch	27.2	27.2	29	29	29.5	29.5
E Side tables	mm	600 x 485	750 x 650	1000 x 750	1000 x 750	1000 x 750	1000 x 750
	inch	23.6 x 19.1	29.5 x 25.6	39.4 x 29.5	39.4 x 29.5	39.4 x 29.5	39.4 x 29.5
F Table height	mm	900	900	900	900	900	900
	inch	35.4	35.4	35.4	35.4	35.4	35.4
G Machine length with side tables	mm	1930	2215	2575	2895	3605	3605
	inch	76	87.2	101.4	114	142	142
H Machine width with side tables	mm	1980	2420	3150	3370	3550	3760
	inch	78	95.3	124	132.7	139.8	148
I Machine height	mm	1540	1560	1650	1650	1730	1730
	inch	60.6	61.4	65	65	68.1	68.1
Continuous knife cycle rate	r/min	45	45	45	45	45	45
Hydraulic pressure	kN	1,5–30	1,5–35	1,5–45	1,5–55	1,5–60	1,5–70
Minimum cut without false clamp	mm	20	22	25	25	35	35
	inch	0.8	0.85	1	1	1.4	1.4
Minimum cut with false clamp	mm	55	80	90	90	100	120
	inch	2.1	3.1	3.5	3.5	3.95	4.7
Power consumption	kW	3,0	3,0	4,0	4,0	5,5	7,5
	HP	4.0	4.0	5.5	5.5	7.5	10.0
Weight net	Kg	1850	2550	3850	4550	5850	6850
	lbs	4080	5625	8490	10035	12900	15100



Extensive standard equipment – nothing is left to be desired

- One-piece machine frame cast iron
- All tables made of cast iron, chromium plated
- Air nozzles in all tables
- Air tables equipped with fan
- Overhead back gauge drive, mutual linear and ball screw
- Closed cutting table without gap
- Turn/swivel back gauge manually adjustable
- Hydraulic clutch
- Hydraulic clamping infinitely adjustable
- Variable adjustable clamp pressure
- Rear table cover with 2 movable segments, electrically secured
- 25 channel self-regulating safety light guards
- Mechanical overflow protection (safety latch)
- Safety bolts for overload protection device
- Two-hand cut release with inhibition and repetitive cutting
- Clamp protection
- Protection switches for all drive motors
- Electric knife time delay control
- Emergency stop switch
- Lockable main switch
- Side lays, chromium plated
- Working table light
- Cutline indicator, mechanical
- Cutline indicator, optical
- Graphic illustration of processes (Monitor models)
- Remote control – remote monitoring (preparation)
- Knife changing device incl. lifting system and adjust gauge
- False clamp cover
- Order sheet holder
- Drawer below side tables
- 2 HSS knives
- 10 cutting sticks
- Pushing block
- Operation manual, spare parts catalogue, electric diagram
- Wear and tear part set
- Tool box
- 3-phases 200/400 V / 50/60 Hz
- CE certification*

*safety features might differ for countries without CE regulations

Options

- Retractable side lay
- Automatic waste removal TrimCut
- Automatic waste transport system TrimMove
- EUROCUT office software
- Frequency controlled main motor to reduce knife speed
- JDF converting software (CIP4)
- Folding tables
- Carbide-tipped knives
- Clamp cover in special sizes, flexible
- Programmable pressure adjustment
- Cut optimization

- Side tables in special sizes
- Separate air supply front table
- Stronger blowers

All solo high speed guillotines can be extended to cutting lines, using our peripheral equipment for applications such as loading, jogging, transport, buffering or unloading.

Please look at www.eurocutter.de to see our complete product line.

30 different models – a suitable control for each user



EUROCUTTER® Display SP2

The programmable basic solution equipped with 5.7" monochrome monitor, available in all cutting sizes.



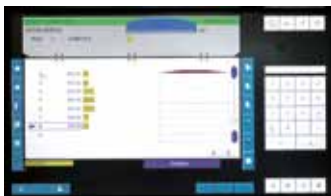
EUROCUTTER® M / TM SP2

Programmable software-control equipped with all available functions, 10.4" color-display. TM-version equipped with Touch Screen Monitor, all cutting sizes available.



EUROCUTTER® SM / TSM SP2

Programmable software-control equipped with all available functions; 15" color-display. TSM type with Touch Screen Monitor. SM and TSM are available from cutting size 1150 to 1760 mm.



EUROCUTTER® XLM SP2

The programmable top model with 18.5" Full-Touch Screen Monitor, available for cutting widths 1150 to 1760 mm.

All available functions and software-controls under: www.eurocutter.de

EUROCUTTER® AD Best choice for very large formats

- Cutting widths from 1850 to 4000 mm
- Double pull-arm system

More information under www.eurocutter.de





MZE Maschinenbau GmbH & Co. KG

Siemensstr. 21
D-65779 Kelkheim/Germany

Fon: +49 6195 9942-10
Fax: +49 6195 9942-40

E-Mail: info@eurocutter.de
Internet: www.eurocutter.de